

# Prestige Chair

---



## STANDARD FEATURES

- High Back Seat for Added Comfort
- High Quality and Resilient Molded Ergonomic Seat Foam
- Flex Back Brackets for Motion Back
- Welded Round Tube Steel Base
- Heavy Duty Return Swivel
- Swivel Cover for Added Safety
- Nylon Glides for Easy Movement and Added Protection
- Single 6" Bracket



## DIMENSIONS

Height:	44.5"
Width:	19"
Depth:	20.5"
Seat Height:	18"

## OPTIONS

- Two-Toned Back
- Powder Coat Color
- Double 3" Brackets
- Back Handle (6" Bracket Required)
- Chair Back Logo Embroidery
- Seat Height Available in 19", 22", 24", 27", 30"



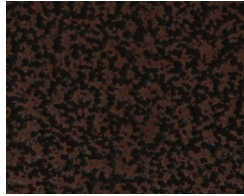
# Standard Finishes

---

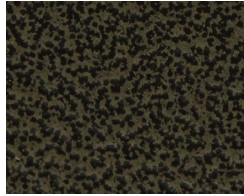
## POWDER COAT



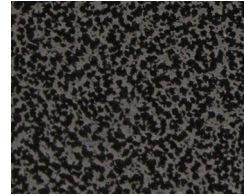
Antique Gold



Antique Copper



Antique Bronze



Antique Silver



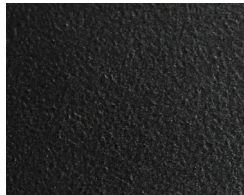
SCI Black Matte



SCI Gun Metal



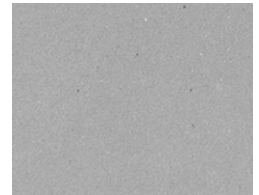
SCI Black Texture



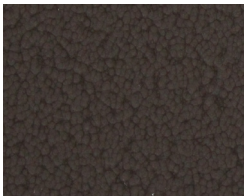
SCI Blacken Steel



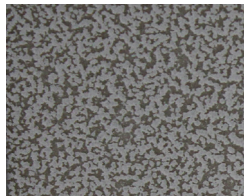
SCI Bronze



SCI Silver Chrome



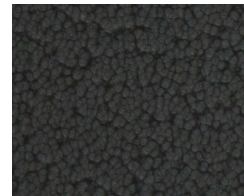
Sepia



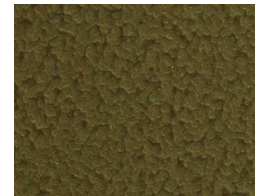
White Hybrid



Light Silver



Black



Gold Brown

## VINYL & WOVEN FABRICS

All vinyl and woven colorways of CF Stinson serve as standard fabric for all Maxx Seating chairs. Available patterns and hues can be found at [www.cfstinson.com](http://www.cfstinson.com) under *Vinyl & Non PVC*.