

Prestige Premier Chair



STANDARD FEATURES

- High Back Seat for Added Comfort
- High Quality and Resilient Molded Ergonomic Seat Foam
- Flex Back Brackets for Motion Back
- Welded Round Tube Steel Base
- Heavy Duty Return Swivel
- Swivel Cover for Added Safety
- Nylon Glides for Easy Movement and Added Protection
- Single 6" Bracket
- Remove Back Panel with Pry Bar 2 Bolt Quick Release



Easily remove and replace backing
→

Easily remove and replace seat cushion
↓



OPTIONS

- Two-Toned Back
- Powder Coat Color
- Back Handle (6" Bracket Required)
- Chair Back Logo Embroidery
- Seat Height Available in 19", 22", 24", 27", 30"

DIMENSIONS

Height:	44.5"
Width:	19"
Depth:	20.5"
Seat Height:	18"
Weight:	44lbs



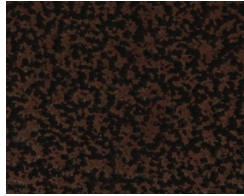
Standard Finishes



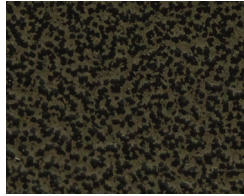
POWDER COAT



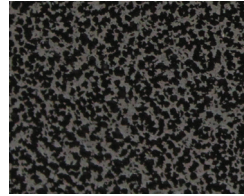
Antique Gold



Antique Copper



Antique Bronze



Antique Silver



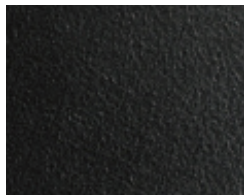
SCI Black Matte



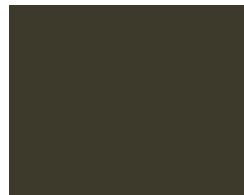
SCI Gun Metal



SCI Black Texture



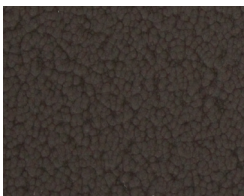
SCI Blacken Steel



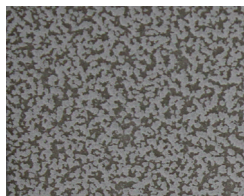
SCI Bronze



SCI Silver
Chrome



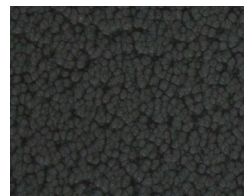
Sepia



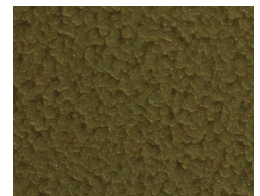
White Hybrid



Light Silver



Black



Gold Brown

VINYL & WOVEN FABRICS

All vinyl and woven colorways of CF Stinson serve as standard fabric for all Maxx Seating chairs. Available patterns and hues can be found at www.cfstinson.com under *Vinyl & Non PVC*.