

Regent Slot Chair



STANDARD FEATURES

- High Back Seat for Added Comfort
- High Quality and Resilient Molded Ergonomic Seat Foam
- Optional Pull Handle on Back Plate
- Optional Carpet Sliders on Disc Base
- Self-Returning Gas Lift
- Large Halfmoon Footrest



OPTIONS

- Fabric/PU/PVC/Genuine Leather
- Powder Coat Color
- Back Handle (6" Bracket Required)
- Chair Back Logo Embroidery
- Seat Height Available in 19", 22", 24", 25", 27"

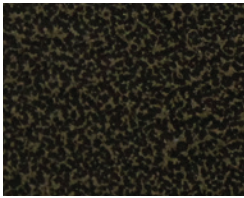
DIMENSIONS

| | |
|--------------|-------|
| Height: | 44.5" |
| Width: | 19" |
| Depth: | 20.5" |
| Seat Height: | 18" |

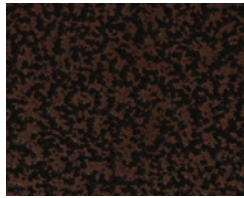
Standard Finishes



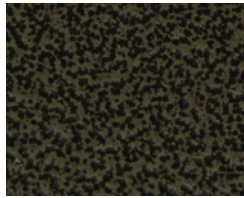
POWDER COAT



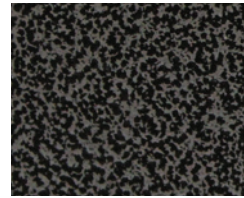
Antique Gold



Antique Copper



Antique Bronze



Antique Silver



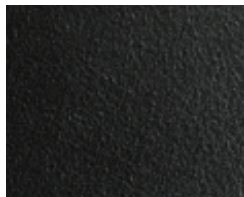
SCI Black Matte



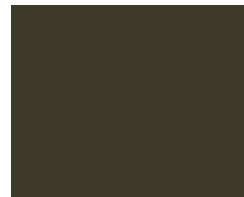
SCI Gun Metal



SCI Black Texture



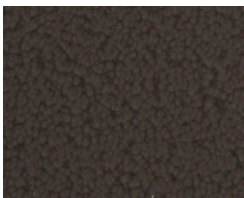
SCI Blacken Steel



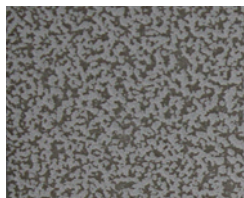
SCI Bronze



SCI Silver
Chrome



Sepia



White Hybrid



Light Silver



Black



Gold Brown

VINYL & WOVEN FABRICS

All vinyl and woven colorways of CF Stinson serve as standard fabric for all Maxx Seating chairs. Available patterns and hues can be found at www.cfstinson.com under *Vinyl & Non PVC*.